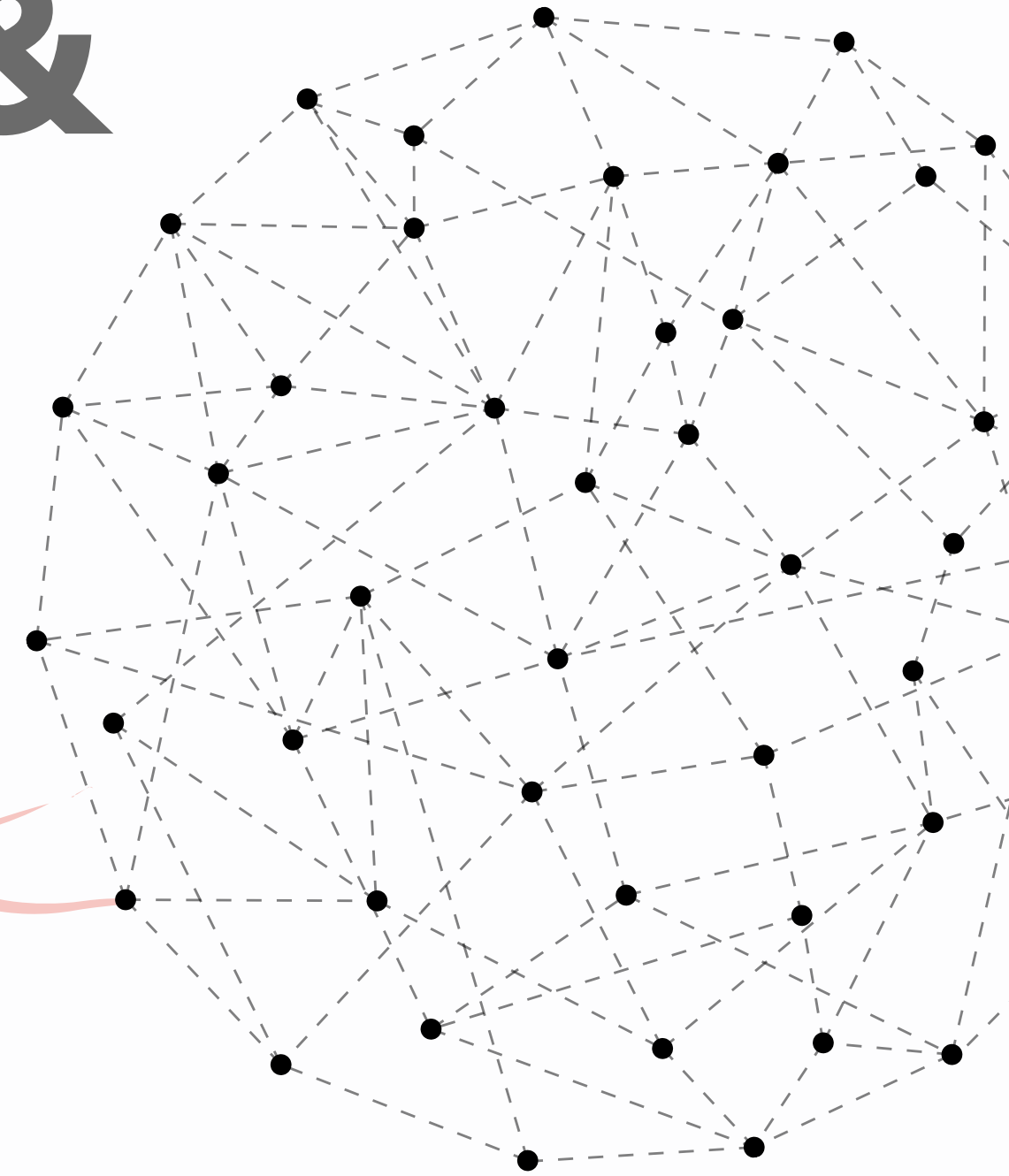


# NETWORKING: RELATIONSHIPS & CONNECTIONS



**Consider:**

*How will this information be helpful for me?*

*Why is this information useful to me?*

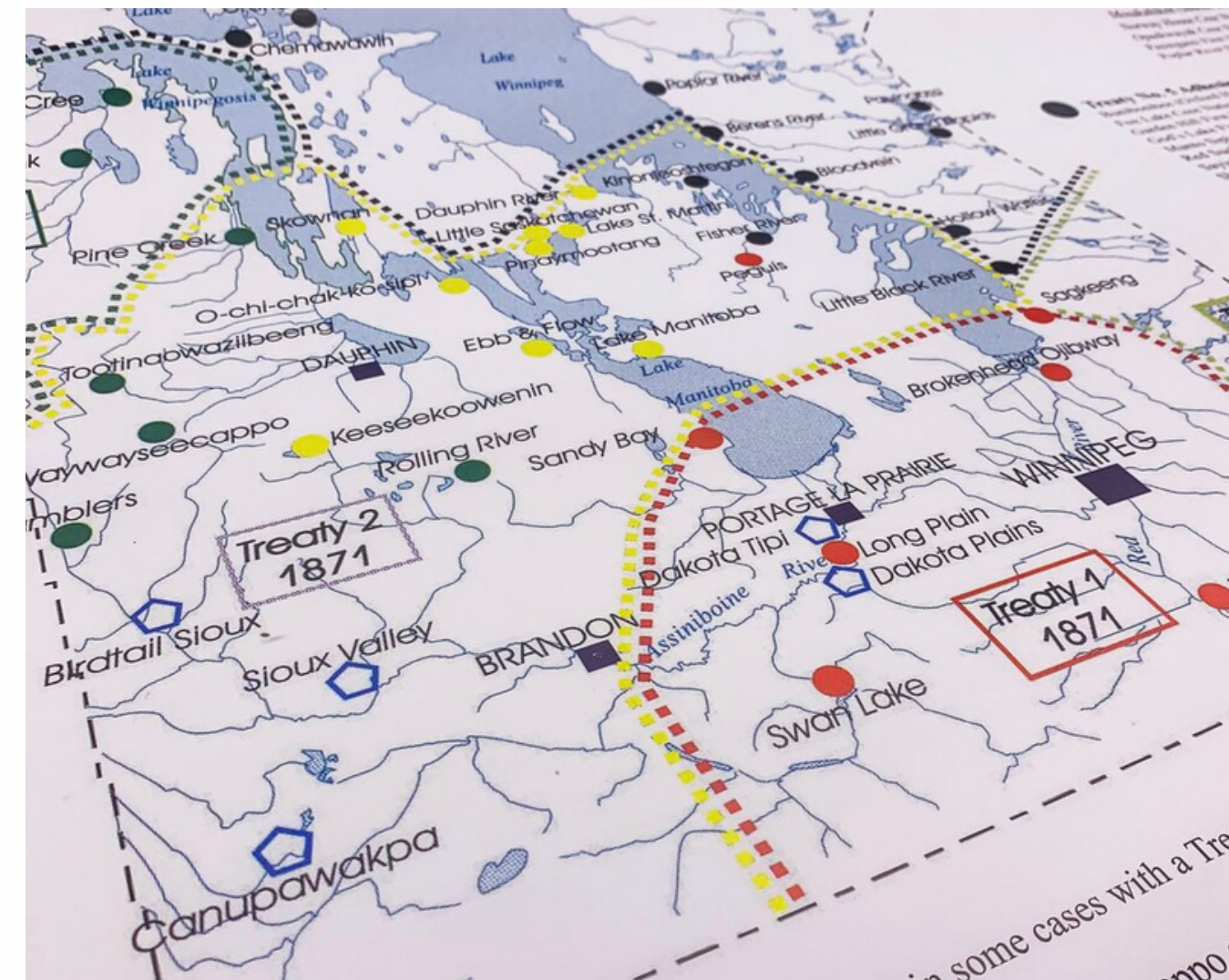
*When will I make use of this information?*

# Opening Remarks



# Commitment to Reconciliation, Equity & Inclusion

I am a white, cisgender female and use pronouns she and her. I am grateful to my family who raised me and persevered through hardships to allow me the privileges I have now. I acknowledge those who came before my family on Treaty 2 Territory, the traditional homelands of the Očhéthi Šakówin, the Anishinabewaki, and the Michif Piyii (Métis) People. I commit to raising my children to know about, respect, and honour those that came before them, too.



Visit [native-land.ca](http://native-land.ca)

# Commitment to Reconciliation, Equity & Inclusion

Truth & Reconciliation

94 Calls to Action

Specific to sectors



Visit [nctr.ca](http://nctr.ca)

# Welcome & Introductions



**Megan Foster, MA (she/her)**

- Founder of Mosaic Engagement
- Passionate about helping leaders inspire and energize team members
- On a mission to motivate organizations to harness the expertise and creative power within their own team

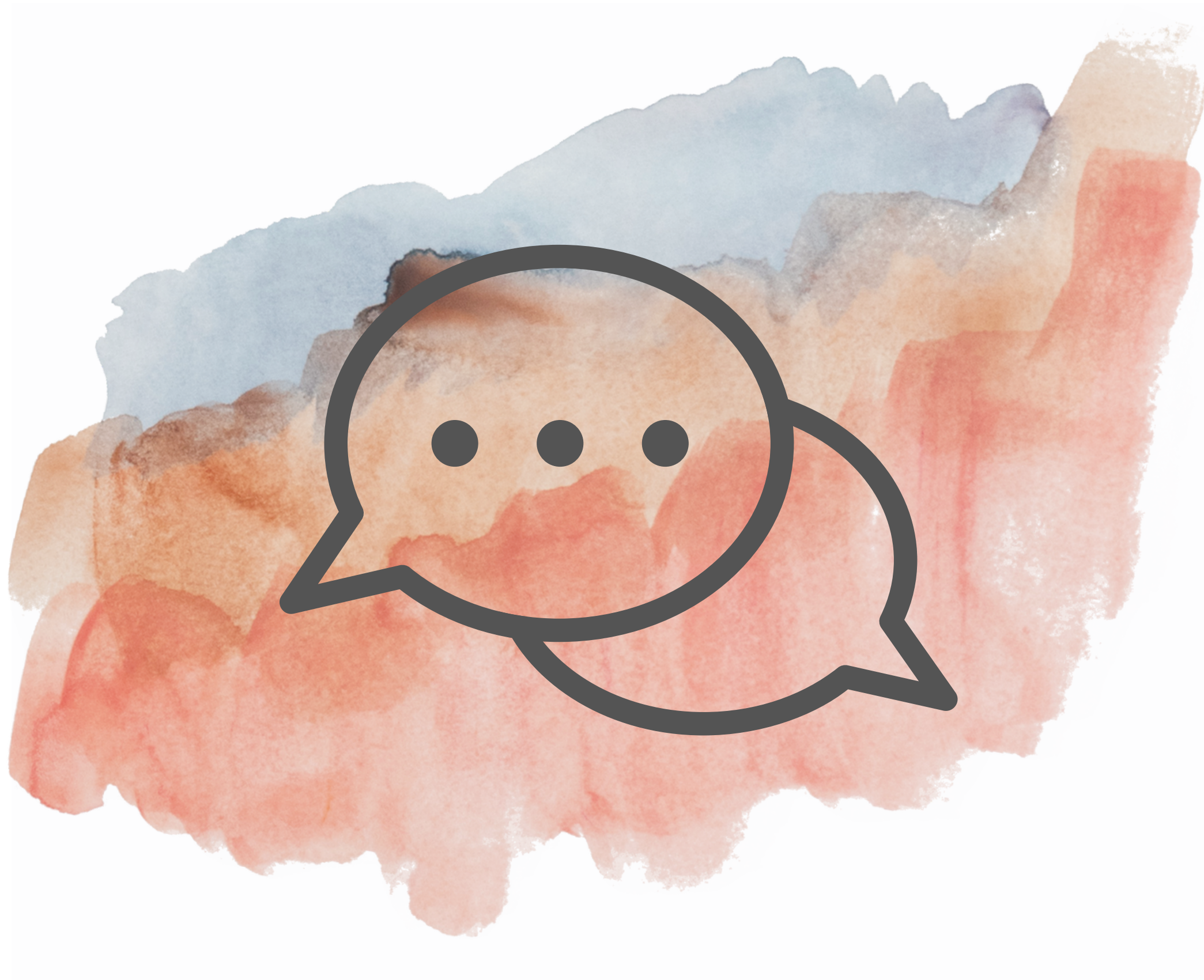
[mosaicengagement.ca](https://mosaicengagement.ca)



STAY  
ENGAGED




# Introductions



- Who you are
- What your role is
- What division you're with
- New skill you're learning


# TYPES OF NETWORKING



- 
- Spontaneous opportunities
  - Intentional events
  - Virtually





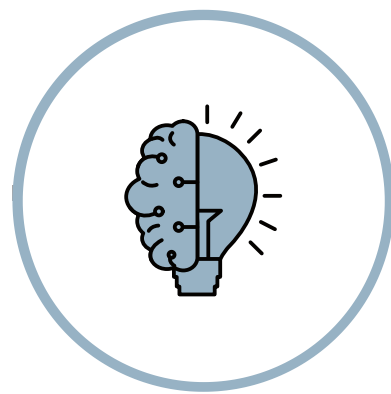
The background features abstract watercolor washes in shades of blue, orange, and red, with a central semi-transparent blue rectangle containing the text.

**" The fastest way to change  
who you are is to hang out  
with people who are already  
the way you want to be."**

*- REID HOFFMAN,  
CO-FOUNDER OF LINKEDIN*

# LEVERAGE YOUR CONNECTIONS & RELATIONSHIPS





**1**

What is  
my intention?



**2**

Who do I know?



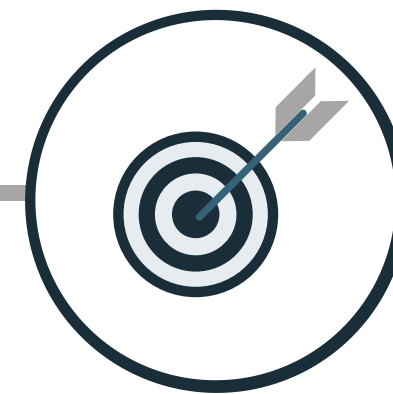
**3**

Who do  
*they* know?



**4**

Where to make  
new connections?

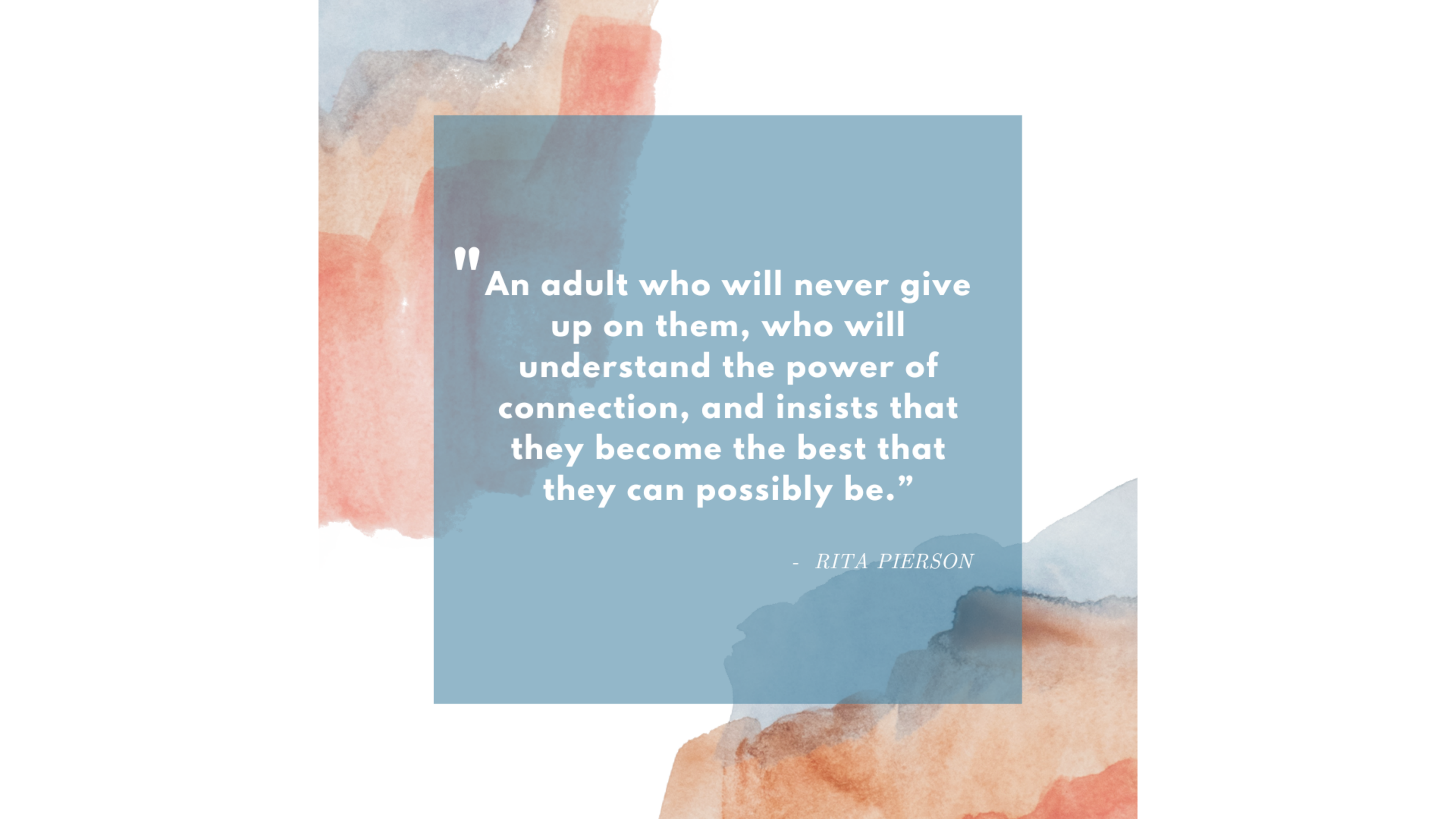


**5**

Make the call.

# RITA PIERSON: TED TALK



The background features a watercolor-style wash of colors, primarily light blue and soft orange, with some darker, more saturated areas. The colors are blended and layered, creating a textured, artistic effect. A solid blue rectangular box is overlaid on the center of the image, containing the quote and attribution.

**“An adult who will never give up on them, who will understand the power of connection, and insists that they become the best that they can possibly be.”**

*- RITA PIERSON*

You  
Are  
All  
Champions

Take a look around.

Every child deserves one of these  
champions.

THANK YOU

# Connect With Me



**Megan Foster (she/her)**  
Strategic facilitator specializing in  
developing organizational culture; kno...



**Megan Foster**  
**Mosaic Engagement**

[www.mosaicengagement.ca](http://www.mosaicengagement.ca)  
[megan@mosaicengagement.ca](mailto:megan@mosaicengagement.ca)

**Culture Development**  
**Facilitation**  
**Training**

